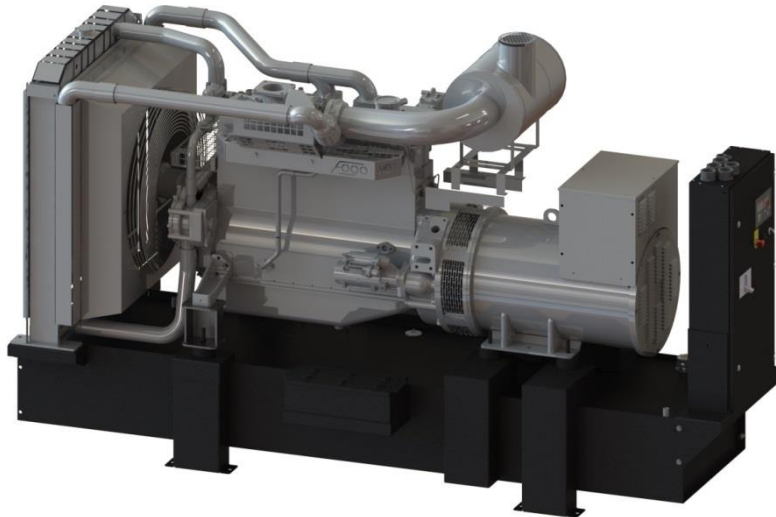


MAIN FEATURES

Highest quality and reliability.	Wide range of standard and optional equipment.
ComAp IntelliLite AMF 25 controller.	Engine heater – ready to load just after start.
Ready to control MAINS – GENERATOR transfer switch.	Drip tray,
Configured for both manual and automatic mode (MRS + AMF).	Frame anticorrosion coating – Zr.
Wide range of remote communications options.	Brushless alternator.
Schneider NSX type GCB.	



The presented image is for illustration purpose only.

GENERAL DATA

Code	F.0300.DAP.F	Nominal power P.R.P.:	Prime power available in variable load application in accordance with ISO 8528, 10% overload capacity is available for a period of 1h within a 12-hour period of operation, but not more than 25 hours per year. Average power consumption should not exceed 70% PRP for each 24 hours of work. Limited to 500h of operation per year with 100% P.R.P power consumption.
Standby power E.S.P. [kVA] / [kW]	327,0 / 262,0	Stand-by power E.S.P.:	Standby power rating is applicable for supplying emergency power for the duration of a utility power interruption. No overload allowed, average power consumption should not exceed 70% ESP. Limited to 200h of operation per year including 25 hours with ESP.
Prime power P.R.P. [kVA] / [kW]	298,0 / 238,0	Remark:	Ratings represent the genset performance capabilities to standard conditions specified in ISO 8528-1
Prime current P.R.P [A]	430,0	Norms and directives:	<ul style="list-style-type: none"> • Machinery directive 2006/42/EC • Low voltage directive 2014/35/EC • EC directive 2014/30/EC • Emission directive 97/68/EC • ISO 8528-1:2018, ISO 8528-5:2018 • ISO 8528-13:2016 • EN 60204-1
Frequency [Hz]	50		
Voltage [V]	400		
Exhaust emission	non-emission		
Fuel type	Diesel (EN 590)		
Fuel consumption - 50% load [l/h]	31,3		
- 75% load [l/h]	47,3		
- 100% load [l/h]	63,1		
- 110% load [l/h]	77,6		
Standard fuel tank capacity [l]	720		
Autonomy with 100% load [h]	11,4		
Engine control voltage [V]	24		
Weight without fuel [kg]	~2500		
Dimensions L x W x H [mm]	3243 x 1184 x 1903		
Acoustic power Lwa [dBA]	121,1 ± 0,7		
Acoustic pressure Lpa (7m) [dBA]	91,8 ± 0,7		

STANDARD CONTROLLER

Controller type: ComAp IntelliLite AMF 25

Easy to operate, intuitive graphical interface

Real time clock with battery supply

Stan-by and Prime power applications, AMF function available

Flexible event based history with up to 350 events

3 Phase generator current measurement

Generator and Mains phase voltage measurement

Active/reactive power measurement

Active and reactive energy counter

Running hours counter, multipurpose flexible timers

Battery charging alternator circuit connection

Comprehensive gen-set protections

Wide range of communication capabilities including :

- CAN and USB on board
- Internet access using Ethernet, GPRS or 4G module
- Support for Modbus and SNMP protocols

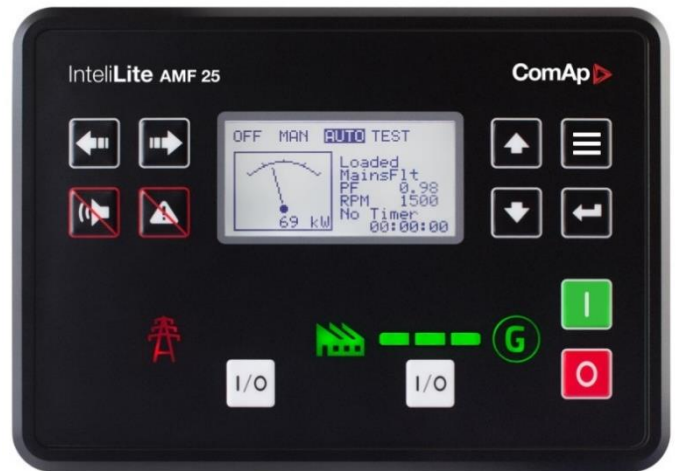
Cloud-based monitoring and control via WebSupervisor

Active SMS or e-mails (module required)

Geofencing and tracking via WebSupervisor

Operating temperature -20 + 70°C

IP65 operator interface protection



ENGINE

Brand	Doosan
Type	P126TI-2
Made in	South Korea
Engine power [kW]	258,0
Emission standard*	non-emission
Rotation per minute [rpm]	1500
Engine governor	electronic
Governor class**	G3
Displacement [l]	11,1
No of cylinder	6
Fuel system	direct injection
Electrical system [V]	24
Cooling system capacity [l]	51,0
Oil pan capacity [l]	23,0
Fuel type	Diesel (EN 590)

* According directive 97/68/EC non road mobile machinery engine emission.

** According ISO 8528-5:2018

ALTERNATOR

Nominal Voltage [V]	400
Nominal power factor (cos phi)	0,8
Ambient temperature, altitude	40 °C, 1000m a.m.s.l
Nominal Power [kVA]	300,0
IP protection	IP 23
No of bearing	single bearing
Coupling	direct
Technology	brushless
Short circuit maintaining capacity	270% 10s
Efficiency [%]	92,3
Insulation class	H
Total harmonic content THD [%]	2,5
Reactance Xd'' [%]	11,8
Voltage regulator type	DVR, digital
Voltage measurement	3 phases
Voltage accuracy [%]	+/- 0,25
AVR supply system	auxiliary winding
AVR supply optional	PMG
Made in	EU



FOGO FOCUSED ON GENERATORS ONLY

Power Generator FDF 300 D

STANDARD EQUIPMENT

Doosan P126TI-2 engine	✓
Electronic engine speed governor	✓
Oil low pressure switch	✓
Oil pressure sensor	✓
Engine high temperature switch	✓
Engine high temperature sensor	✓
Engine preheating with thermostat	✓
Engine oil Titan Cargo 15W40	✓
Fuel filter with water separator	✓
Coolant Fuchs Maintain Fricofin HDD Premix	✓
Starting batteries 2x180 Ah	✓
Battery charger	✓
GCB Schneider NSX 630 3P + Mic.2.3	✓
GCB shunt release coil	✓
Controller ComAp InteliLite AMF 25	✓
Acoustic alarm	✓
Emergency stop button	✓
Welded frame with fuel tank	✓
Fuel level measurement	✓
Exhaust compensator	✓
Engine and alternator vibro isolators	✓
Silencer delivered with the generator	✓
Transportation brackets	✓

OPTIONAL EQUIPMENT

Oil draining hand pump	✓
Battery disconnection switch	✓
GCB 4P Schneider NSX Micrologic 2.3	✓
Power Lock type power output	✓
Power socket box	✓
Transfer switch controlled by generator controller	✓
Transfer switch with ATS controller	✓
GPRS communication card	✓
Ethernet card	✓
RS 485, RS 232 card	✓
Remote display	✓
Fuel and retention pump	✓
Non-standard fuel tank size	✓
External fuel tank 1 000 – 10 000 l	✓
3-way valve for external fuel tank connection	✓
Fuel tank filling pump and shut-off valve	✓

**INSTALLATION GUIDELINES**

Power terminal	GCB terminal
Recommended cable for up to 30m power cable way	Flexible 2x5x95 mm ²
Recommended cable for do 30m generator heater supply	Flexible 3x2,5 mm ²
*For additional cable connection with FOGO ATS see ATS wiring diagram	
Exhaust pipe min diameter (max. 7 m, 4 bends)	114,3 mm
Exhaust pipe min diameter (max. 15 m, 4 bends)	133 mm

MAINTENANCE GUIDELINES

Fuel filters replacement	200 h / 1 year
Oil replacement	After first 50h, then every 200 h / 1 year
Oil filters replacement	After first 50h, then every 200 h / 1 year
Coolant replacement	1000 h / 2 years
Battery replacement	2 years
Electrical installation supervising	According to local requirements, at least once per year

WARRANTY

Continuous work generators	12 months up to 1000 working hours
----------------------------	------------------------------------