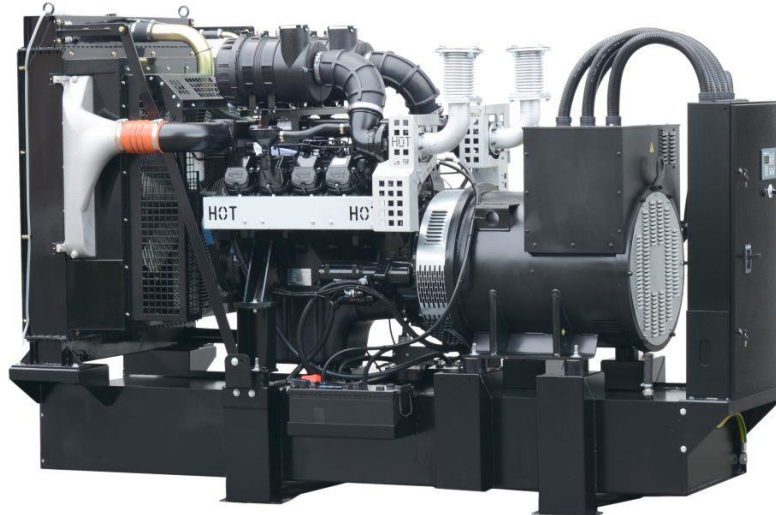


MAIN FEATURES

Highest quality and reliability. ComAp IntelliLite AMF 25 controller. Ready to control MAINS – GENERATOR transfer switch. Configured for both manual and automatic mode (MRS + AMF).	Wide range of standard and optional equipment. Engine heater – ready to load just after start. Drip tray, Frame anticorrosion coating – Zr.
Wide range of remote communications options. Schneider NS type GCB.	Brushless alternator.



The presented image is for illustration purpose only.

GENERAL DATA

Code	F.0455.DAP.F
Standby power E.S.P. [kVA] / [kW]	501,0 / 400,0
Prime power P.R.P. [kVA] / [kW]	455,0 / 364,0
Prime current P.R.P [A]	657,0
Frequency [Hz]	50
Voltage [V]	400
Exhaust emission	non-emission
Fuel type	Diesel (EN 590)
Fuel consumption - 50% load [l/h]	47,2
- 75% load [l/h]	70,3
- 100% load [l/h]	96,1
- 110% load [l/h]	107,1
Standard fuel tank capacity [l]	720
Autonomy with 100% load [h]	7,3
Engine control voltage [V]	24
Weight without fuel [kg]	~3090
Dimensions L x W x H [mm]	3266 x 1401 x 2106
Acoustic power Lwa [dBA]	121 ± 0,7
Acoustic pressure Lpa (7m) [dBA]	91,1 ± 0,7

Nominal power P.R.P.:

Prime power available in variable load application in accordance with ISO 8528, 10% overload capacity is available for a period of 1h within a 12-hour period of operation, but not more than 25 hours per year. Average power consumption should not exceed 70% PRP for each 24 hours of work. Limited to 500h of operation per year with 100% P.R.P power consumption.

Stand-by power E.S.P.:

Standby power rating is applicable for supplying emergency power for the duration of a utility power interruption. No overload allowed, average power consumption should not exceed 70% ESP. Limited to 200h of operation per year including 25 hours with ESP.

Remark:

Ratings represent the genset performance capabilities to standard conditions specified in ISO 8528-1

Norms and directives:

- Machinery directive 2006/42/EC
- Low voltage directive 2014/35/EC
- EC directive 2014/30/EC
- Emission directive 97/68/EC
- ISO 8528-1:2018, ISO 8528-5:2018
- ISO 8528-13:2016
- EN 60204-1

STANDARD CONTROLLER

Controller type: ComAp IntelliLite AMF 25

Easy to operate, intuitive graphical interface

Real time clock with battery supply

Stan-by and Prime power applications, AMF function available

Flexible event based history with up to 350 events

3 Phase generator current measurement

Generator and Mains phase voltage measurement

Active/reactive power measurement

Active and reactive energy counter

Running hours counter, multipurpose flexible timers

Battery charging alternator circuit connection

Comprehensive gen-set protections

Wide range of communication capabilities including :

CAN and USB on board

Internet access using Ethernet, GPRS or 4G module

Support for Modbus and SNMP protocols

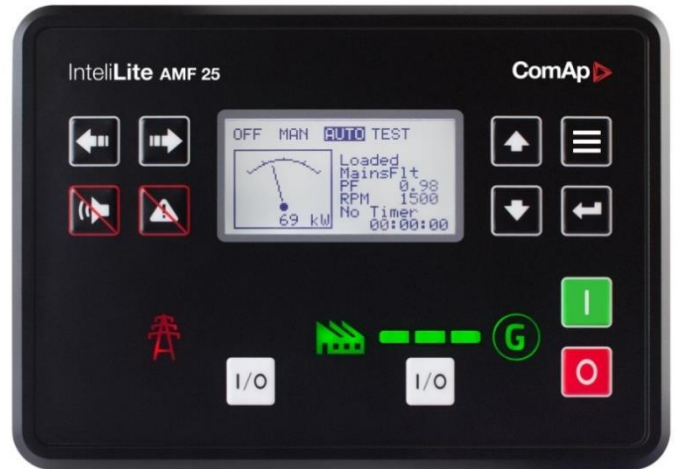
Cloud-based monitoring and control via WebSupervisor

Active SMS or e-mails (module required)

Geofencing and tracking via WebSupervisor

Operating temperature -20 + 70°C

IP65 operator interface protection



ENGINE

Brand	Doosan
Type	DP158LC
Made in	South Korea
Engine power [kW]	392,0
Emission standard*	non-emission
Rotation per minute [rpm]	1500
Engine governor	electronic
Governor class**	G2
Displacement [l]	14,6
No of cylinder	8
Fuel system	direct injection
Electrical system [V]	24
Cooling system capacity [l]	79,0
Oil pan capacity [l]	22,0
Fuel type	Diesel (EN 590)

ALTERNATOR

Nominal Voltage [V]	400
Nominal power factor (cos phi)	0,8
Ambient temperature, altitude	40 °C, 1000m a.m.s.l
Nominal Power [kVA]	455,0
IP protection	IP 23
No of bearing	single bearing
Coupling	direct
Technology	brushless
Short circuit maintaining capacity	270% 10s
Efficiency [%]	94,2
Insulation class	H
Total harmonic content THD [%]	1,5
Reactance Xd'' [%]	13,9
Voltage regulator type	DVR, digital
Voltage measurement	3 phases
Voltage accuracy [%]	+/- 0,25
AVR supply system	auxiliary winding
AVR supply optional	PMG
Made in	EU

* According directive 97/68/EC non road mobile machinery engine emission.

** According ISO 8528-5:2018



FOGO FOCUSED ON GENERATORS ONLY

Power Generator FDF 455 D

STANDARD EQUIPMENT

Doosan DP158LC engine	✓
Electronic engine speed governor	✓
Oil low pressure switch	✓
Oil pressure sensor	✓
Engine high temperature switch	✓
Engine high temperature sensor	✓
Engine preheating with thermostat	✓
Engine oil Titan Cargo 15W40	✓
Fuel filter with water separator	✓
Coolant Fuchs Maintain Fricofin HDD Premix	✓
Starting batteries 2x180 Ah	✓
Battery charger	✓
GCB Schneider NS800 3P +Micrologic 2.0	✓
GCB shunt release coil	✓
Bar connection	✓
Controller ComAp InteliLite AMF 25	✓
Acoustic alarm	✓
Emergency stop button	✓
Welded frame with fuel tank	✓
Fuel level measurement	✓
Exhaust compensator	✓
Engine and alternator vibro isolators	✓
Silencer delivered with the generator	✓
Transportation brackets	✓

OPTIONAL EQUIPMENT

Oil draining hand pump	✓
Battery disconnection switch	✓
GCB 4P Schneider NS Micrologic 2.0	✓
Power Lock type power output	✓
Power socket box	✓
Transfer switch controlled by generator controller	✓
Transfer switch with ATS controller	✓
GPRS communication card	✓
Ethernet card	✓
RS 485, RS 232 card	✓
Remote display	✓
Fuel and retention pump	✓
Non-standard fuel tank size	✓
External fuel tank 1 000 – 10 000 l	✓
3-way valve for external fuel tank connection	✓
Fuel tank filling pump and shut-off valve	✓



FOCUSED ON GENERATORS ONLY

Power Generator FDF 455 D

INSTALLATION GUIDELINES

Power terminal	Busbar
Recommended cable for up to 30m power cable way	Flexible 2x5x185 mm ²
Recommended cable for do 30m generator heater supply	Flexible 3x2,5 mm ²

*For additional cable connection with FOGO ATS see ATS wiring diagram

Exhaust pipe min diameter (max. 7 m, 4 bends)	2x114,3 mm
Exhaust pipe min diameter (max. 15 m, 4 bends)	2x114,3 mm

MAINTENANCE GUIDELINES

Fuel filters replacement	200 h / 1 year
Oil replacement	After first 50h, then every 200 h / 1 year
Oil filters replacement	After first 50h, then every 200 h / 1 year
Coolant replacement	1000 h / 2 years
Battery replacement	2 years
Electrical installation supervising	According to local requirements, at least once per year

WARRANTY

Continuous work generators	12 months up to 1000 working hours
----------------------------	------------------------------------

Wersja: 01.2021

Datasheet could be changed without notification

www.fogo.pl

FOGO Sp. z o.o.
ul. Świąteczowska 36, Wilkowice
64-115 Świąteczowa

tel. +48 65 534 11 80
fax +48 65 534 11 81
generators@fogo.pl